

# PRODUCTS

- Hammer Mills
- Single Roll Crusher
- Double Roll Crusher
- Smooth Roll Crusher
- Hybrids



## CPC MACHINE AT MINE SITE

Contact CPC Crushing Processing for:

- New machines
- Replacement of existing machines
- Maintenance
- Spares for Hammer Mills & Roll Crushers
- Spares for CPC machines

## WHO IS CPC?

- In 2014, the manufacturing unit of erstwhile Aubema GmbH in Germany closed down and the production shifted to China.
- Being faced continuously to customers' demands, Bruno Goetz decided to incorporate his own Company, CPC Crushing Processing GmbH, focusing on crushers for coals and minerals as well as machines for other industries.
- Since incorporation, there is a continuous process increase of sales and CPC has sales and distribution partners in several countries.
- CPC machines are successfully commissioned and running at various sites worldwide.

**DIN 9001 certified**

### CPC Crushing Processing GmbH

Finkenstraße 17 Phone: +49 (0)221 / 168 417 76  
74229 Oedheim info@cpcgmbh.com  
Germany www.cpcgmbh.com



**CPC**  
Crushing Processing GmbH



**CPC**  
Crushing Processing GmbH

## HAMMER MILL HM 10

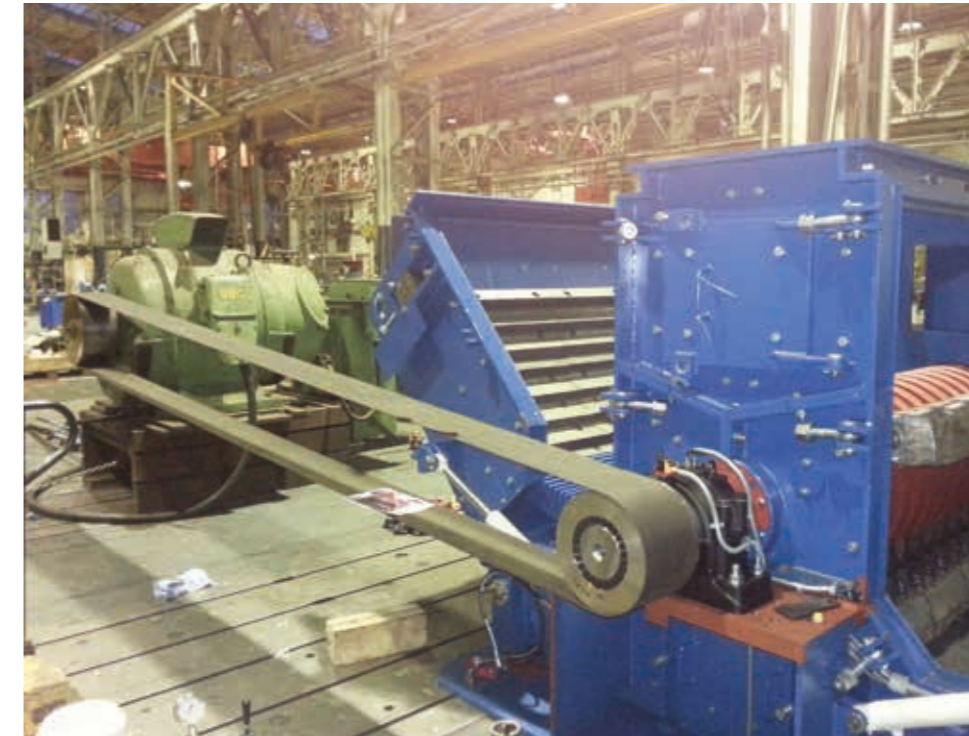


**Ahead in Technology - your benefit!**

**Ahead in Technology - your benefit!**

# HAMMER MILL TEST RUN

Test run with recording file.



## YOUR BENEFIT:

### Bimetal High Chrome Hammer Heads

- Extreme long Live Time

### Grinding Wall modular

- Lowest Energy Consumption
- Generation of various final products
- Transfer Oil Heating System optional

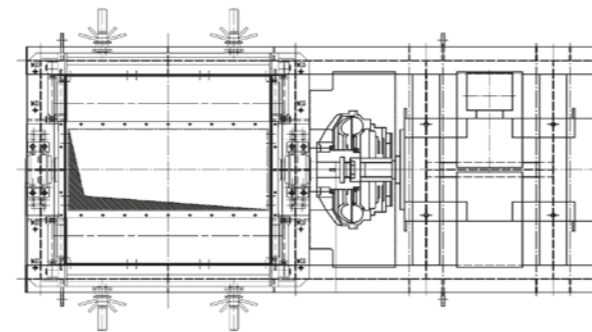
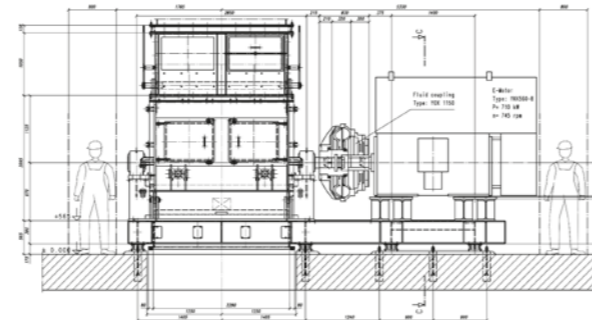
### Monitoring by Local

#### Operator Panel

- Bearing Temperature and Vibration
- Speed
- Lubrication

### Service and Support

- Implementation into your Process
- Plant layout and design
- Installation and commissioning worldwide



## HAMMER MILL TYPES

Hammer Mill	Throughput t/h P90 % = 8 mm	KW
1212	100 - 150	132 - 200
1214	150 - 200	250 - 315
1414	200 - 250	355 - 400
1418	300 - 350	450 - 560
1622	400 - 550	600 - 850
1626	550 - 700	850 - 1100
1630	700 - 850	1000 - 1250
1634	850 - 1000	1200 - 1500



**Ahead in Technology - your benefit! ...**

**... made in Germany.**